



What's a Metaphor Anyway?

Metaphor sounds like a big word, but you make metaphors all the time without even knowing it. When you say something like, "I'm dog tired" or "I gobbled that all up," you are comparing yourself to animals without really saying "Hey, I'm like a dog" OR "I'm like a goose."

Poets do this all the time. Read the poem by Carl Sandburg and answer the questions to help you see the metaphor.

FOG

THE fog comes
on little cat feet.

It sits looking
over harbor and city
on silent haunches
and then moves on.

1. What is he comparing the fog to? _____

2. List the words in the poem that make you think of this animal.

3. What does fog and this animal have in common? How are they alike?

Clear as Crystal

Use the pictures as clues to complete each **simile**.

A **simile** is a phrase or figure of speech that compares two things using the words **like** or **as**.



owl



button



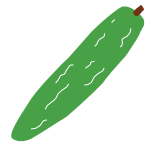
mouse



lightning



daisy



cucumber

Chris tiptoed down the stairs, quiet as a _____ .

The smiling little baby is as cute as a _____ !

Armand is a good tennis player. He runs as quick as _____ !

My grandma knows so much, she is as wise as an _____ .

Kim is never nervous. She is always as cool as a _____ .

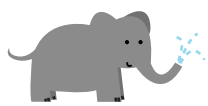
The clean laundry smells as fresh as a _____ .

Now make up your own simile!

Easy as Pie

Use the pictures as clues to complete each **simile**.

A **simile** is a phrase or figure of speech that compares two things using the words **like** or **as**.



elephant



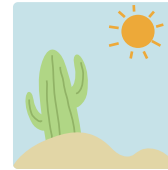
bee



bat



feather



desert



tree

I'm so thirsty, my mouth is as dry as a _____ .

Without her glasses on, Judy felt as blind as a _____ .

The baby kitten is as light as a _____ .

I was as busy as a _____ as I worked to finish my homework.

My older brother is as tall as a _____ .

If my dog keeps eating so much, he'll become as big as an _____ .

Now make up your own simile!
